



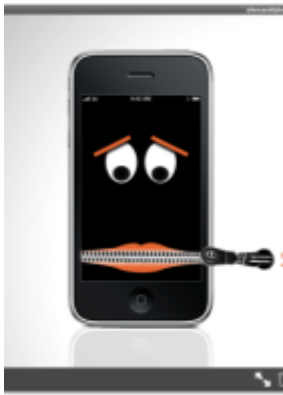
First Aid Response

Cardiac First Response (CFR)



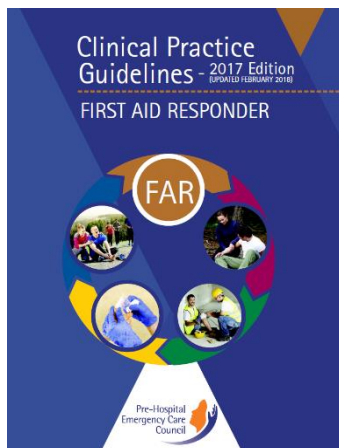
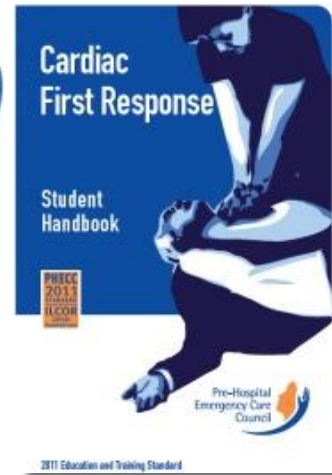


Housekeeping





Resources?



Request Emergency Dispatch (RED) Card

We have developed the RED card to help you prepare the information you will need before you call an ambulance to an emergency incident. Using the RED card will help the person taking your call to arrange an appropriate and fast response when you call for an ambulance.

Please follow the steps over when calling Ambulance Control 999 or 112

RED Card

Information and sequence required by Ambulance Control when requesting an emergency ambulance response:

1. Phone number you are calling from
2. Location of incident
3. Chief complaint
4. Number of patients
5. Age (approximate)
6. Gender
7. Conscious? Yes/No
8. Breathing normal? Yes/No
9. If >65 years Chest pain? Yes/No
10. If trauma Severe bleeding? Yes/No



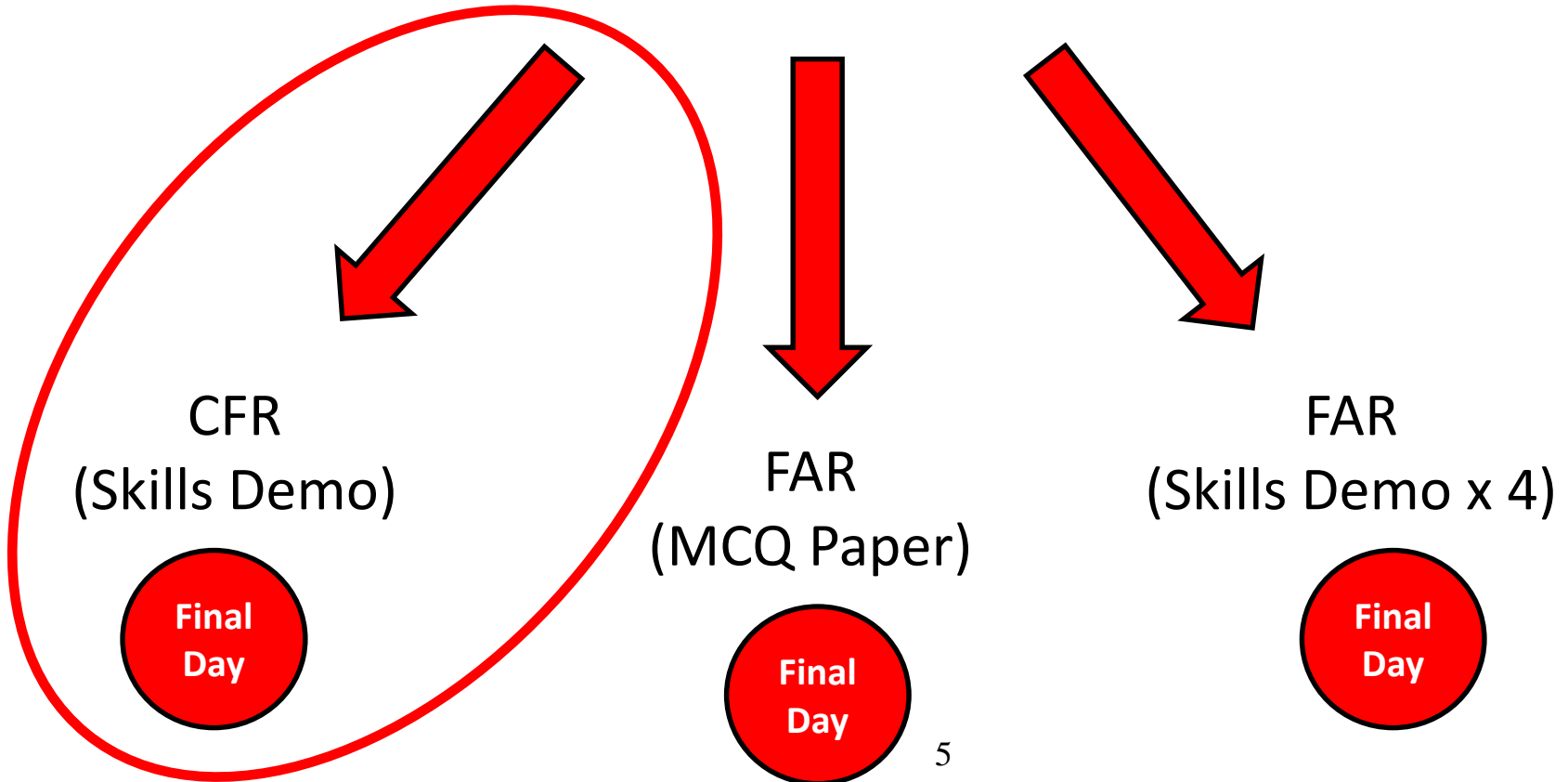
Agenda

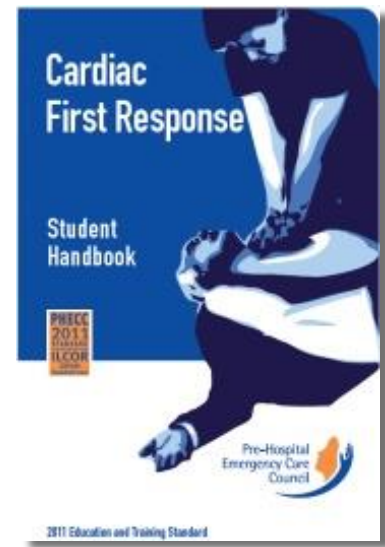
- Duration: 3-4 hours
- Interactive Disc
- Group Discussion
- Practical Demonstrations
- Learner Practice Sessions



Final Assessment

“First Aid Response”







Summary

- Scene Safety, Responsiveness, Check Breathing
- Chest Compressions – Adult & Child
- AED
- Post Resus Care
- FBAO – Adult & Child
- Heart Attack & Aspirin
- Stroke / FAST Assessment
- Handover to EMS